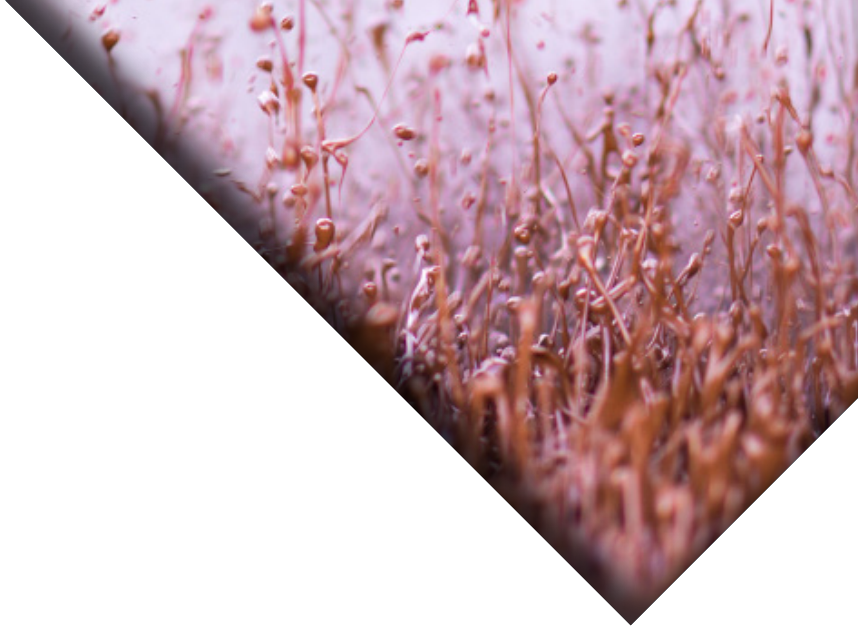




# SHALE SHAKER.



## SPECIFICATION.

**SERIES**  
5111

**MODEL**  
BLE CD

**MOTORS**  
1200, 2500 or 1800 rpm

**BEARINGS**  
Permanently sealed and lubricated

**MOTION**  
Balanced Elliptical/Liner Motion

**VGS**  
Force adjustable to 8.0 "G" Max

**DECK**  
-2.5° to +5°

**SCREENS**  
Four 42" x 29" pretensioned panels

**SCREENING AREA**  
35ft<sup>2</sup> (3.25m<sup>2</sup>)

**OVERALL DIMENSIONS**  
132 13/16" (3373.39mm) L x 71 3/8" (1812.20mm) W x 62 1/4" (1581.15mm) H

**SCREENS**  
Four 42" x 29" pretensioned panels

**WEIGHT APPROX.**  
4600 LBS

## PRODUCT DESCRIPTION.

This unit has been designed to achieve optimum performance even in the most challenging applications. Permanently sealed vibrators make lubrication systems totally unnecessary and the low 80-dB motor vibration eliminates the need for hearing protection.

Each of the four pretensioned screen panels can be installed or replaced independently of each other. Replacement takes less than three minutes and requires only a light to medium weight hammer.

The balanced linear elliptical motion drive system uses field proven vibrator motors, maximizing solids conveying, liquid throughput and reducing fluid retention on cuttings.

### FEATURES & BENEFITS.

- High G force
- Low maintenance
- Small footprint
- Quick screen changes
- Low noise
- No lubrication required